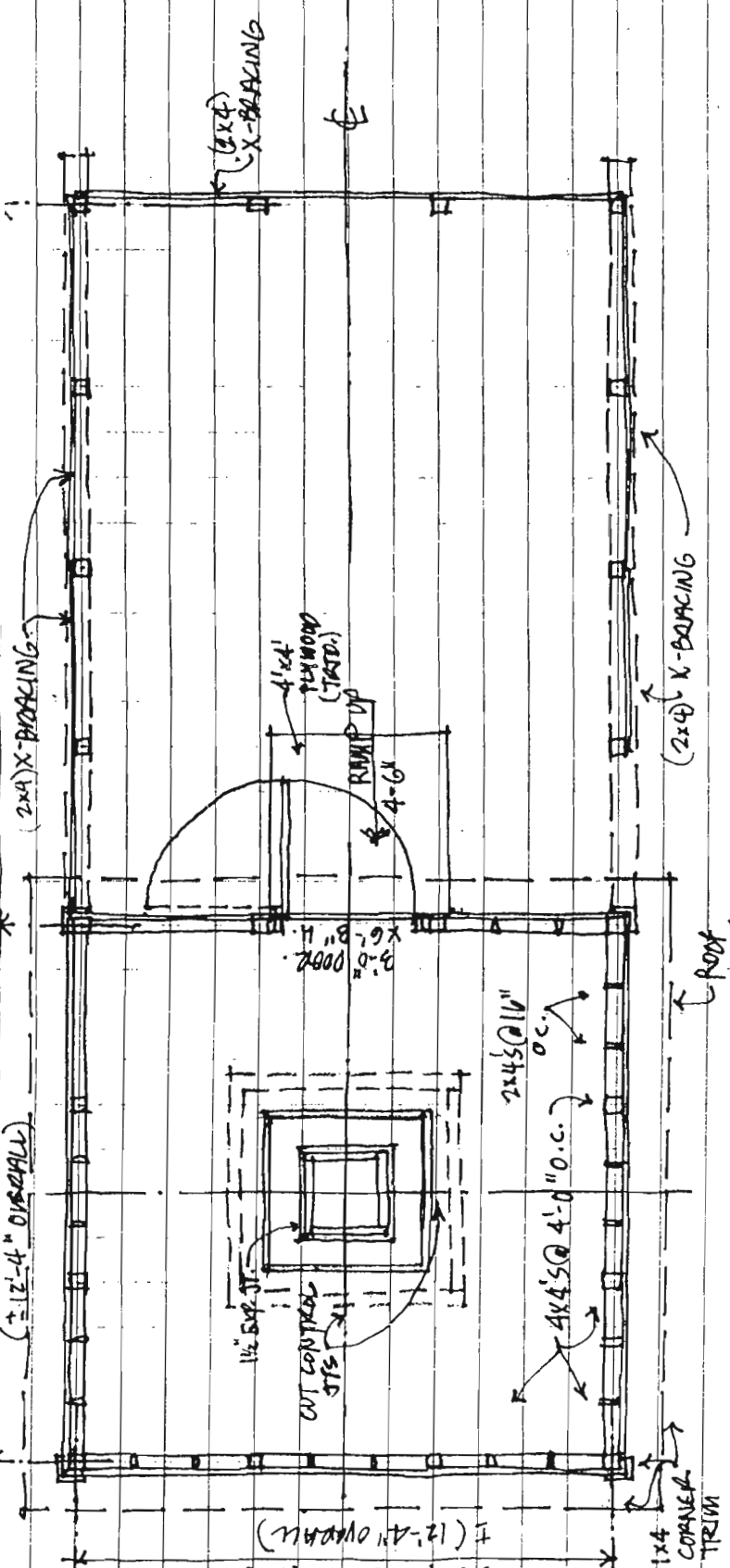
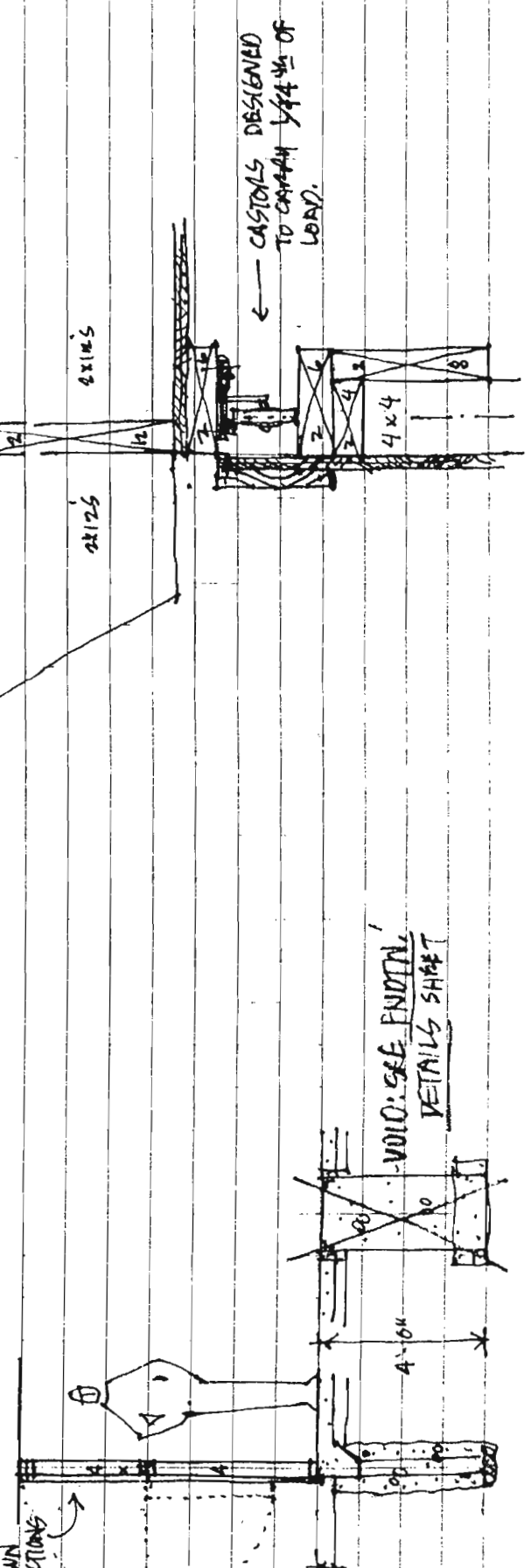


5-20-96



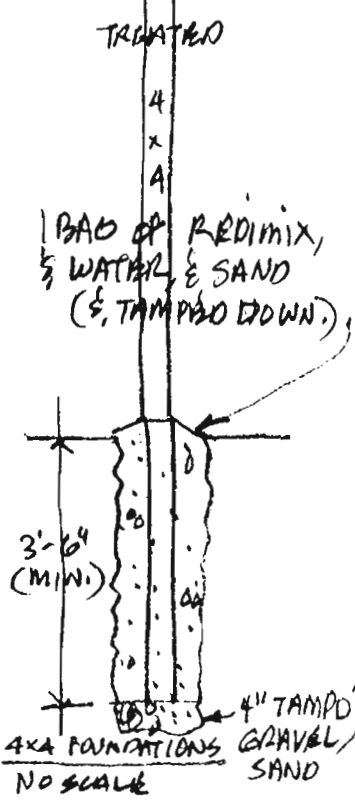
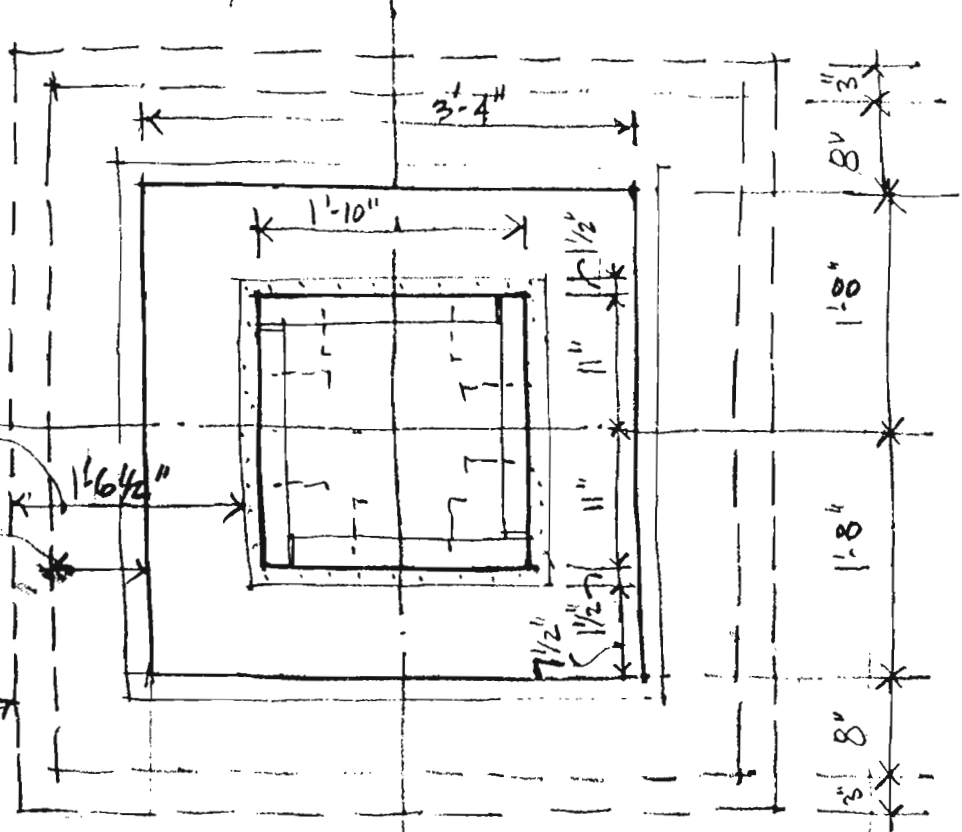
FLOOR PLAN: OBSERVATORY @ KAZOO: NATURAL CENTER for NORTH  
 1/4" = 1'-0" • THE KALAMAZOO ASTRONOMICAL SOCIETY



↑  
KNC

1.1 yd for wall

KNC  
ASTRONOMY  
CLUBS  
OBSERVATORY



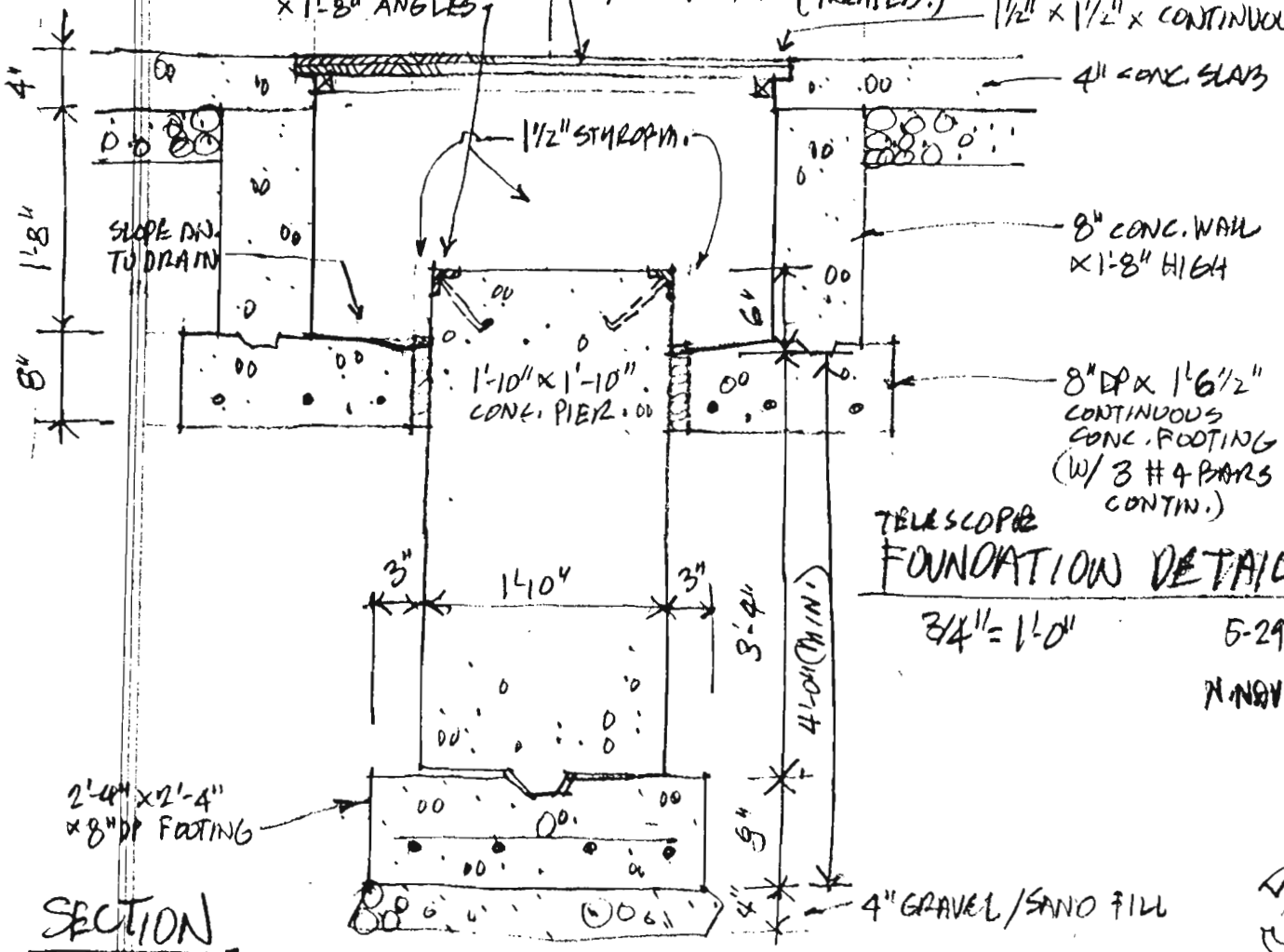
FOOTING  
8" FNDTN. WALL  
EDGE OF FOOTING

PLAN

(4) L2x2 GALVANIZED  
x 1'-8" ANGLES

2 LAYERS 3/4" PLYWOOD  
w/ 2x2 FRAME (TREATED)

1/2" x 1/2" x CONTINUOUS NOTCH  
4" CONC. SLAB



TELESCOPE  
FOUNDATION DETAILS

3/4" = 1'-0"

5-29-96

N. NOVE, A/A

SECTION

3  
KNC.